

PRESS RELEASE

NO TITLE. GER DE GREEF (1954-2012)

March 24 until incl. May 26, 2024

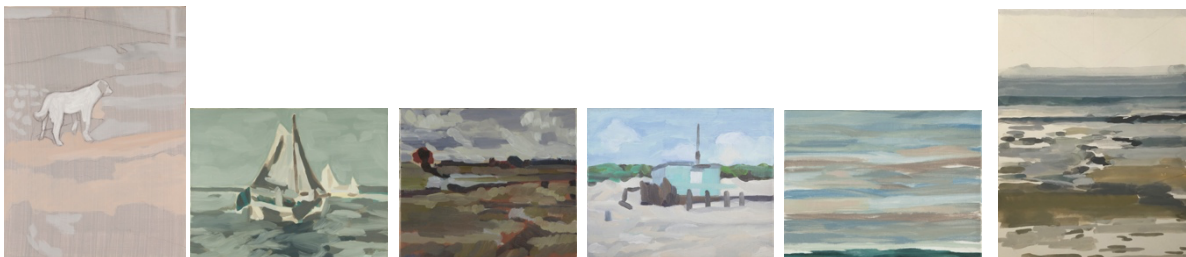
Most of Ger de Greef's works don't have a title. This Brabant artist was not concerned with the subject. The path from image to imagination – from perception to representation – resulting in a drawing, watercolour or painting was a form of being for him. 'Art and life intertwine', he wrote in 1983.

The basis could be a landscape but also a photo or a picture in a book. De Greef grew up in the polders between West Brabant and Zeeland. His love for flat landscapes originated there. From the 1990s onwards he often worked on the Zeeland coast, especially in Domburg.

He could often be found in our museum. A selection of his oil paintings, watercolours, pencil drawings and photographs can now be seen there from March 24 to May 26, 2024. Sober, hushed, and melancholic impressions, with a Zeeland base.

Ger de Greef was born in Steenberghe on September 22, 1954; he died in Roosendaal on May 10, 2012. After the Academy of Visual Arts in Tilburg (1975-1980), he trained at the Higher Institute of Fine Arts in Antwerp (1981-1982). He worked as a drawing and painting teacher at the School for Expression in Roosendaal and as a multi-media design teacher at the ROC Zoomvliet College, also in Roosendaal.

As art educator, he tried to teach as many people as possible the art of attentive looking and the love of painting. Ger de Greef's oeuvre is managed by his wife Corin van Agtmaal.



For photos and more information: info@museumdomburg.nl

THE ARTISTS' COLONY DOMBURG

At the end of the nineteenth century, Domburg made name as a simple international Spa town, with the major attraction of the doctor and physiotherapist Johan Georg Mezger (1838-1909). After Mezger's death and the First World War (1914-1918), the town slowly changed into a family seaside resort for the middle class. For a long time its history remained hidden, but from the 1980s onwards Domburg is chronicled as an old style Artists' Colony.

Of old, artists have roamed Walcheren, attracted as they were by the unspoiled beauty of the surroundings, the special light along the coast and its reflection on the country embraced by water. With a couple of Belgian painters such as Emile Claus, Euphrosine Beernaert and Camille Van Camp as forerunners round about 1870, the Artists' Colony Domburg came into a first bloom about 1900, experienced its hey-day during the period of the well-known Domburgsche Tentoonstellingen (1911-1921) and lasted until the end of the 1920s. The Artists' Colony Domburg came to a symbolic end when the 'Kunstzaal' collapsed as a result of violent storms in the winter of 1921-1922.

THE MTVP MUSEUM

Since 1994, the Marie Tak van Poortvliet Museum Domburg (marietakmuseum.nl) organises successful exhibitions on the participants in the old exhibitions, on contemporary artists who have ties with Zeeland and in co-operation with the ICEAC (iceac.eu) on other notable Colonies from the end of the 19th and the early 20th centuries. The plans to expand the Museum and to connect it to the ICEAC are being elaborated, with the latter representing the scientific side of euroart (euroart.eu). One endeavours to let the inauguration of the Research- and Documentation Centre coincide with the opening of the new Museum in 2025 or 2026.

MTVP Museum Domburg | Ooststraat 10a | 4357 BE Domburg | T 00 31 118 584618

